

NORTHWEST GEOLOGICAL SOCIETY

A regional association of professionals, students & others interested in geology
Please browse www.nwgs.org for more about us

October 2011 Newsletter

Volume 25, Number 6

October 11 Program Speaker (Join meeting with AWG)

Speaker: Deborah Kelley, Univ. Washington School of Oceanography

Title: Volcanic Eruptions and Life at 5000 feet Beneath the Ocean's Surface off the Oregon Coast

Abstract:

In April 2011, Axial Seamount, located ~300 miles off the coast of Oregon, had a major underwater eruption. Axial is the most magmatically robust volcano on the Juan de Fuca Ridge, having erupted twice in the last 13 years. It is also seismically and hydrothermally active, hosting numerous high temperature hydrothermal fields, abundant sites of lower temperature diffuse flow, and spectacular biological communities thriving at depths of 5000 ft beneath the ocean's surface. Because of these features, Axial has been chosen as a major installation site for the high power and bandwidth, Internet-connected underwater cabled observatory with sensor installation beginning in 2013.

This talk will show extensive HD video of the eruption taken with the ROV ROPOS during the VISIONS'11 cruise (<http://www.interactiveoceans.washington.edu/visions11>), which in some places was over 40 feet thick, and spectacular snowblowers, sites where microbiological material is streaming from beneath the seafloor that offer important windows into the deep biosphere.

PROGRAM DINNER RESERVATIONS: NWGS members: **\$35**; Non-members: **\$40**; Full-time students : **\$15**. \$45 for LATE REGISTRATION. Make your reservation and payment on-line at www.nwgs.org (or mail your payment to **Dan Smith, 10203 40th Ave SW, Seattle, WA. 98146** (must be received by Thursday prior to meeting). Contact him at 206-937-5313 or nwgeo@yahoo.com.

If attending the speaker program only, a \$5 voluntary donation to help defray the meeting room cost is requested.

Location: Pacific Dining Hall at the [Talaris Conference Center](#), 4000 NE 41st St., Seattle, WA. Ph 206-268-7000. **Directions:** See [on-line directions with map](#), or: from I-5 northbound or southbound in Seattle, take Exit 168B (NE 45th St.). Drive east on NE 45th St. past UW down the hill and past University Village. Turn south (right) onto Mary Gates Memorial Drive at the 5-way intersection. MGM Drive will curve east (left) and become NE 41st St. Continue several blocks to the [Talaris Conference Center](#) entrance on the north (left) side. We meet in the Pacific Dining room on the left.

Upcoming Speakers and Field Trips

Fall, 2011 FT: Kathy Troost, USGS, Jokulhlaups of Pierce County, Sat. October 15. Make reservations and payment at www.nwgs.org (members only-see About NWGS below to join).

Spring, 2011 FT: Steve Reidel, formerly of Battelle, Abandoned channels of the Pleistocene Columbia River.

November 8 Meeting: Sandy Williamson, USGS (retired), Geohydrology of Afghanistan.

December 13 Meeting: Peter Selkin, UW Tacoma Environmental Science, topic TBA.

5:30pm: No-host social hour

6:30pm: Buffet dinner

7:30pm: Speaker program

All are welcome to attend –
reservations are required
if coming for dinner.

► [Reservations here](#) 

Please see the [NWGS website](#) for detailed announcements.

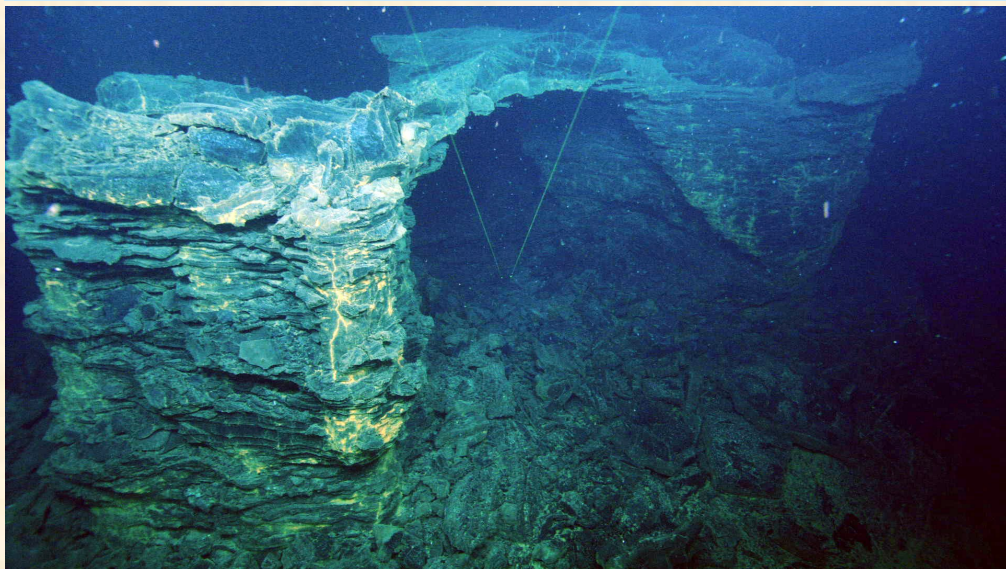
Contact webmaster [Julie Masura](#) if you have any announcements to post on the website.

Announcements

- Dinner and field trip reservations and payments may now be made on the NWGS [on the NWGS web-site](#) at www.nwgs.org!
- The 25 year anniversary symposium, "Strikes and dips: Mapping a path for Pacific Northwest Geosciences," is tentatively scheduled for Sat. Oct. 6, 2012 on the UW campus. Mark your calendar!
- NWGS Historian [Donn Charnley](#) requests any pre-1980s NWGS information. Contact him at donncharnley@frontier.com or 206.546.3868.
- Next **Board meeting** will NOT be immediately before the October 11 program due to the GSA Annual Meeting. Watch your email for rescheduling information.

YOU would like to be involved!

Photo Spotlight



A collapse zone in the April 2011 eruption at Axial Seamount, Juan de Fuca Ridge off the coast of Oregon. Photo submitted by Deborah Kelley.

About NWGS

NWGS, a regional association of professionals, students & other persons interested in **geology**, provides a forum for the presentation and discussion of a wide range of geologic topics, emphasizing those of the Pacific Northwest of fundamental scientific interest.

YOU would like to be involved!

Program meetings: 2nd Tuesdays, October through May in the Pacific Dining Hall at the [Talaris Conference Center](#) in Seattle (see 1st page). Anyone may attend the speaker program, but a reservation is necessary for those wanting dinner (see 1st page). **Field trips (members only):** one in late spring/early summer and one in late summer/early fall, usually of 1-3 days in length. **Membership** is open to anybody with a professional or amateur interest in geology. **Annual dues:** Professional: \$30; Student: \$5. **To join or pay annual dues:** send a check payable to NWGS to Secretary [Dan Smith](#), 10203 40th Ave SW, Seattle, WA. 98146. Please include your name, address, home phone, email, and employer/affiliation (if any). Professional dues may now also be paid at www.nwgs.org.

YOU would like to be involved!

Recommended Readings

Deb Kelley, An Intro to Axial Seamount and Hydrothermal Vents, Interactive Oceans, <http://www.interactiveoceans.washington.edu/rsn/file/An+Intro+to+Axial+Seamount+and+Hydrothermal+Vents>.

Tom Banse, 2011, Undersea cable laid for 'transformative' ocean observatory, Northwest News Network, KUOW, 8/24/2011, <http://www.interactiveoceans.washington.edu/rsn/file/An+Intro+to+Axial+Seamount+and+Hydrothermal+Vents>.

Please send your reading recommendations to Newsletter Editor [Tom Bush](#).

To report a change of email or postal address or request to be removed from mailings, notify Secretary [Dan Smith](#) at 206.937.5313. Questions or comments? Contact President [Julie Masura](#).

NWGS Board

President [Julie Masura](#)
Univ. of Washington

President [John Balla](#)
Elect CEM Minerals Ltd

Past [John Figge](#)
President N. Seattle Com. Coll.

Secretary [Dan Smith](#)
King County

Treasurer [Carla Whittington](#)
Highline Com. Coll.

At-Large [Lars Gilmour](#)
Board Univ. of Washington

Members [Grace Winer](#)
S. Seattle Com. Coll.

Other Personnel

Field Trip [Matthew Von](#)
Coordinator [der Ahe](#)
Aspect Consulting

Publications [John Figge](#)
Director N. Seattle Com. Coll.

Poster [Brittany Brand](#)
Competition Univ. of Washington
Co-chairs [Maura O'Brien](#)
Wa. Dept. of Ecology

Webmaster [Julie Masura](#)
Univ. of Washington

Newsletter [Tom Bush](#)
Editor Pierce College