

NORTHWEST GEOLOGICAL SOCIETY

A regional association of professionals, students & others interested in geology
Please browse www.nwgs.org for more about us



March, 2018 Newsletter

Volume 32, Number 3



March 13 Program Speaker

Speaker: Lisa L. Ely, Geological Sciences, Central Wash. U.

Title: Following in the Footsteps of Charles Darwin: Combining History and Geology to Assess Earthquake and Tsunami Hazards

Abstract: The young explorer, Charles Darwin, experienced one of the largest ever earthquakes in South America during his world-wide voyage on *The Beagle*, which led him to make some of the earliest scientific observations of the geological effects of earthquakes. Our team of geologists followed Darwin's footsteps to the region of central Chile that was struck by this earthquake in 1835 and again by another devastating earthquake in 2010. The well-documented earthquakes and tsunamis in Chile provide examples of how geology, archaeology, and historical documents can be combined to better understand earthquake hazards in similar regions around the world.

5:30pm: No-host social hour
6:30pm: Buffet dinner
7:30pm: Speaker program
All are welcome to attend –
reservations are required
if coming for dinner.

► [Reservations here](#) 

PROGRAM DINNER RESERVATIONS: NWGS members: **\$40**; Non-members: **\$45**; Full-time students : **\$20**. Add \$5 for LATE REGISTRATION. Make your reservation and payment on-line at www.nwgs.org (or mail your payment to *Northwest Geological Society, 4616 25th Ave NE #397, Seattle, WA. 98105* (must be received by Thursday prior to meeting)). Contact Secretary [Beth Tanner](#) with questions about dinner reservations.

If attending the speaker program only, a \$5 voluntary donation to help defray the meeting room cost is requested.

Location (see map p. 3): Pacific Dining Hall at the [Talaris Conference Center](#), 4000 NE 41st St., Seattle, WA., 98105.
Directions: See [on-line directions with map](#), or: from I-5 northbound or southbound in Seattle, take Exit 168B (NE 45th St.). Drive east on NE 45th St. past UW down the hill and past University Village. Turn south (right) onto Mary Gates Memorial Drive at the 5-way intersection. MGM Drive will curve east (left) and become NE 41st St. Continue several blocks to the [Talaris Conference Center](#) entrance on the north (left) side. We meet in the Pacific Dining room on the left).

Upcoming Speakers and Field Trips

April 10: Jim O'Conner, USGS, Floods and Columbia River Geology

May 8: Keith Hudson, UW PhD candidate, Moab Fault Chemistry

May (TBA): Spring field trip, Eric Cheney, UW Emeritus, Floods, Flows, Faults, Glaciers, Gold and Gneisses, From Quincy to Chelan to Wenatchee

If you would like to volunteer to give a talk or lead a field trip for NWGS, please contact President [Tom Colligan](#).

Please see the [NWGS website](#) for detailed announcements.
Contact webmaster [Julie Masura](#) if you have any announcements to post on the website.

Announcements

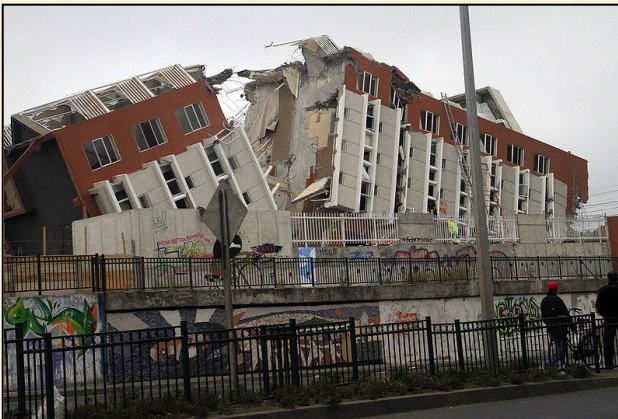
- If interested in a field trip to [the dolomites of Italy](#) in June of 2019 (7-10 days, ~\$4k), please contact Field Trip Coordinator [Kathleen Goodman](#) by March to be put on her interested parties list.
- We are working on a potential field trip to **New Zealand** in 2020! Watch for developments!
- Next **Board of Directors meeting**: January 9, 4:30PM, Talaris Conference Center.

YOU would like to be involved!

Photo Spotlight



Top photo is a sketch by John Clements Wickham showing destruction of the city of Concepción, Chile in the earthquake of February 1835 (from FitzRoy, 1839).



Bottom photo is a collapsed building in Concepción, Chile after the earthquake in February 2010.

About NWGS

NWGS, a regional association of professionals, students & other persons interested in **geology**, provides a forum for the presentation and discussion of a wide range of geologic topics, emphasizing those of the Pacific Northwest of fundamental scientific interest.

YOU would like to be involved!

Program meetings: 2nd Tuesdays, October through May in the Pacific Dining Hall at the [Talaris Conference Center](#) in Seattle (see 1st page). Anyone may attend the speaker program, but a reservation is necessary for those wanting dinner (see 1st page). **Field trips (members only):** one in late spring/early summer and one in late summer/early fall, usually of 1-3 days in length. **Membership** is open to anybody with a professional or amateur interest in geology. **Annual dues:** Professional: \$42; Student: \$5. **To join or pay annual dues:** send a check payable to NWGS to Secretary [Beth Tanner](#), 4616 25th Ave NE #397, Seattle, WA. 98105. Please include your name, address, home phone, email, and employer/affiliation (if any). Professional dues may now also be paid at www.nwgs.org.

YOU would like to be involved!

Recommended Readings

Cowan, D.S., and Miller, M.D., 2017, [Roadside Geology of Washington](#), Mountain Press Pub., Missoula, 400p.

Schermer, E.R., Joffnagle, E.A., Brown, E.H., Gehrels, G.E., and McClelland, W.C., 2018, U-Pb and Hf Isotopic Evidence for an arctic Origin of Terranes in Northwestern Washington, *Geosphere*, vol. 14, no. 2, doi: <https://doi.org/10.1130/GES01557.1>.

Please send your reading recommendations to Newsletter Editor [Tom Bush](#).

To report a change of email or postal address or request to be removed from mailings, notify Membership Chair [George Bennett](#). Questions or comments? Contact President [Tom Colligan](#).

NWGS Board

President [Tom Colligan](#)
Floyd | Snider

President Elect **Open!!!!**

Past President [Scott Calhoun](#)
Independent

Secretary [Beth Tanner](#)
Windermere Real Estate

Treasurer [George Bennett](#)
Bennett Consulting

At-Large Board Member [Katie Brower](#)
Student, W.W.U.

At-Large Board Member [John LaManna](#)
LaManna Geosciences

Other Personnel

Membership Chair [George Bennett](#)
Bennett Consulting

Field Trip Coordinator [Kathleen Goodman](#), AMEC

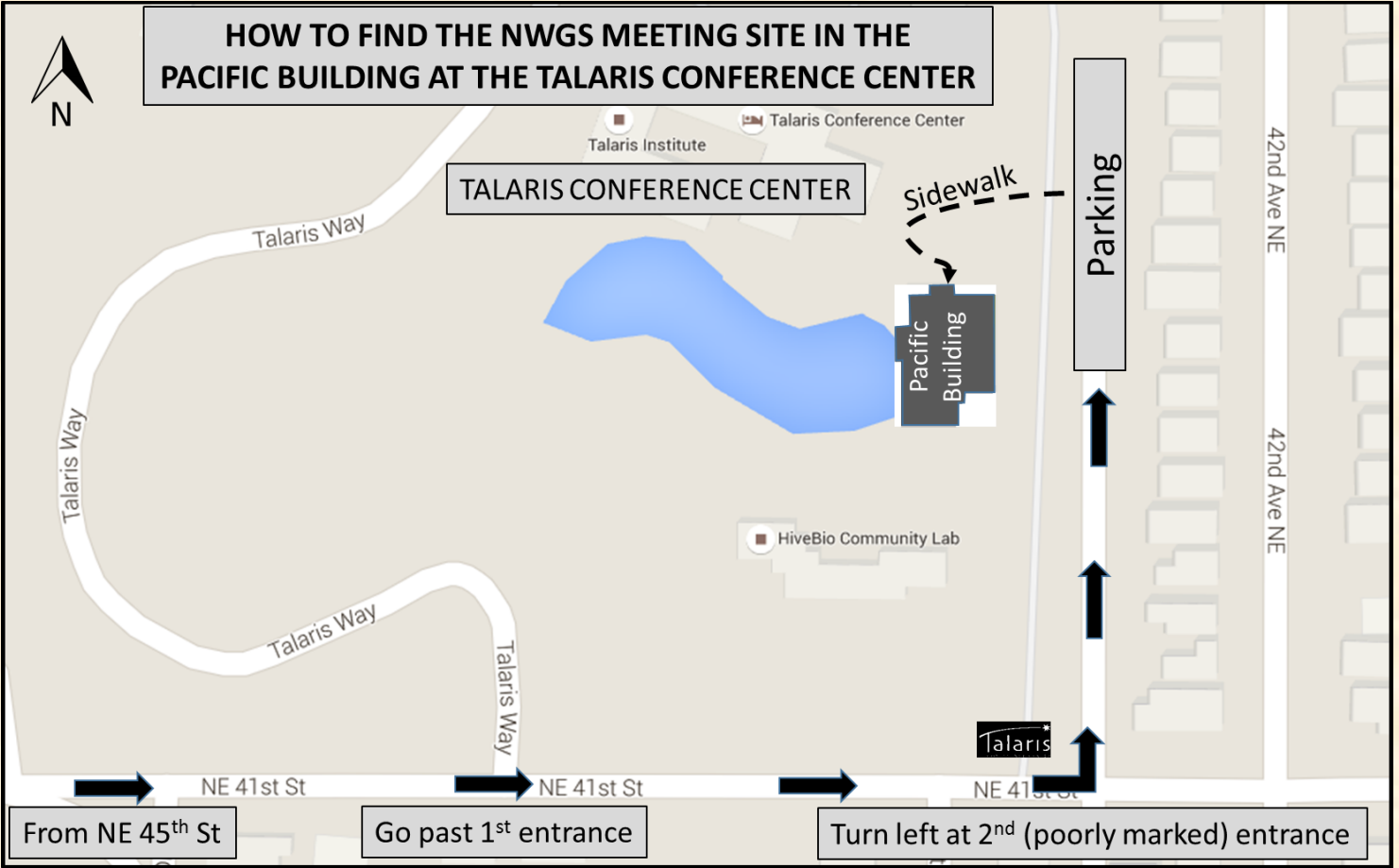
Newsletter Editor & Publications [Tom Bush](#)
Pierce College
Puyallup

Poster Chair [Maura O'Brien](#)
Wa. Dept. of Ecology

Webmaster [Julie Masura](#)
Univ. of Washington

Facebook Page Master [Eric Baer](#)
Highline CC

HOW TO FIND THE NWGS MEETING SITE IN THE PACIFIC BUILDING AT THE TALARIS CONFERENCE CENTER



From NE 45th St

Go past 1st entrance

Turn left at 2nd (poorly marked) entrance