

# NORTHWEST GEOLOGICAL SOCIETY

A regional association of professionals, students & others interested in geology  
Please browse [www.nwgs.org](http://www.nwgs.org) for more about us

## February, 2026 Newsletter

Volume 40, Number 2

February 10 Program Speaker (New meeting location-see below!) 

5:30pm: No-host social hour; 6:30pm: Dinner  
7:30pm: Speaker program ([reservations here](#), see below for details)

**Speaker:** Steve Angster, Research Scientist, USGS Earthquake Science Center, Seattle Office

**Title:** Unravelling the Seattle Fault Zone: Main and Secondary Fault Dynamics

**Abstract:** The Seattle Fault Zone (SFZ) is a complex system of south-dipping thrust faults and associated secondary structures that collectively accommodate north-south shortening beneath the central Puget Lowland. While the main Seattle Fault has long been recognized as a significant seismic hazard, growing evidence suggests that deformation is distributed across a broader zone of subsidiary faults that may rupture independently or in concert with the main structure. This talk synthesizes recent constraints on the late Holocene rupture history of the SFZ, integrating paleoseismic, geomorphic, geophysical, and stratigraphic observations with new results from the Lytle Beach and Vasa Park faults. These secondary faults record late Pleistocene and possibly Historic earthquakes that provide important insight into rupture segmentation, timing, and fault interactions within the SFZ. Together, these data refine our understanding of how strain is partitioned across the fault zone and have implications for earthquake magnitude estimates and hazard assessments in the Seattle metropolitan region.


### IN-PERSON PROGRAM DINNER RESERVATIONS!

**Cost:** NWGS member dinner: \$40; Non-member dinner: \$50; Student dinner: \$10; Talk-only: \$10;  
Student talk-only: free

**To register for attending in-person:** please [make your reservation here \(nwgs.org/meeting-registration/\)](http://nwgs.org/meeting-registration/) by the Thursday prior to the meeting.

**Catered menu:** Chicken or eggplant parmesan.

Please note special dietary needs or food allergies when you register so that a special meal may be ordered for you.

 **New Location:** Hotel 116, 625 116th Ave NE, Bellevue, WA. 98004 ([Google Maps driving directions](#)). Park in the hotel parking area, enter near or through Woods Coffee to a small lobby, then up the stairs to the ballroom.

### Upcoming Speakers and Field Trips

Mar 10: Isabellah Von Trapp, Geosyntec, topic TBA

Apr 14: Colin Amos, WWU, topic TBA

May 12: Sean Mulcahay, topic TBA

Spring Field Trip: Jim Miller/Kathy Troost, Oly. Pen. landslide & eroding terrace at Rialto Beach, April 10-12.

Spring Field Trip: Nick Zetner canoe field trip on the Columbia River, dates TBD.

Fall, 2026: Dave McCormack & Daryl Cowan, location and dates TBD.

If you would like to volunteer to give a talk or lead a field trip for NWGS, please contact President [Jackson Lundgren](#).

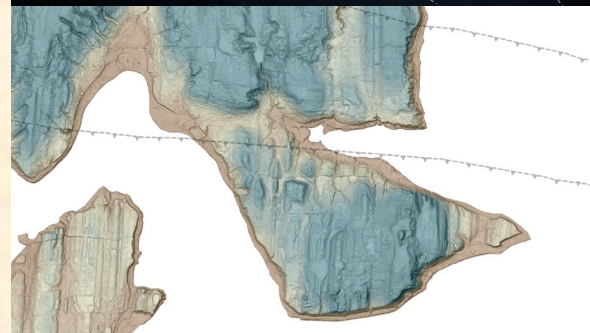
Please see the [NWGS website](#) for detailed announcements.  
Contact webmaster [Matthew Porter](#) if you have any announcements to post on the website.

## Announcements

- We are saddened to report that long-time member **George Sharp** passed away recently. George spent most of his career as a geologist with Weyerhaeuser. [Please see here for his obituary.](#)
- NWGS is still looking to fill the **President Elect** position. Please contact President [Jackson Lundgren](#) for more information. **Shared governance is critical** for the continued viability of our organization.
- Field trip coordinator [Kathleen Goodman](#) is working on a field trip to **Cornwall & Devonshire** and possibly **Wales** in the summer of 2027. Please contact her to be put on her list of interested folks. No payment is required yet, cost TBD.
- Be ready to join an amazing field trip to the **Olympic Peninsula** led by **Jim Miller and Kathy Troost**, April 10-12, 2026, where they are monitoring “a really cool landslide” and will visit an eroding terrace at Rialto Beach.
- Chris Darman is working on a field trip to Wales, early Sept., 2027
- Next **Board of Directors meeting**: Tuesday, February 17, 6:00 pm via Zoom. Members are welcome to attend. Please email [nwgs.secretary.com](mailto:nwgs.secretary.com) for the Zoom link.



## Photo Spotlight



Aerial view looking NW (top) and lidar map of a portion of the Seattle Fault Zone cutting the southern portion of Bainbridge Island west of Seattle.

## About NWGS

The [Northwest Geological Society](#) is a non-profit educational organization which provides a forum for information and discussion on Northwest geology and related topics. The Society sponsors talks by leading academic and professional geologists at its monthly meetings, conducts field trips to locales of regional geologic interest, and publishes meeting summaries and field guides based on those activities. Membership is open to anyone interested in regional geoscience issues.

**Program meetings** are the 2<sup>nd</sup> Tuesdays, October through May at the [Hotel 116, 625 NE 116th Ave NE, Bellevue](#). Reservations are required to attend in-person (Member dinner: \$40; Non-member dinner: \$50; Student dinner: \$10; Talk-only: \$10; Student talk-only: free).

**Field trips (members only)**: The Society sponsors two overnight field trips each year, one in the fall and one the spring, to locales of regional geologic interest.

**Membership** is open to anybody with an interest in geology. **Annual dues**: Professional: \$55; Student: \$10. **To join or pay annual dues**: go to the [NWGS website](#), or visit our website for more details. We look forward to seeing you soon!

## Recommended Readings

Angster, S.J., Sherrod, B., Johns, W. and Pearl, J.K., 2024, Field observations and logs from the Rose Hip trench exposure across a north-facing scarp within the Seattle Fault Zone, southern Bainbridge Island, Washington (No. 3520). US Geological Survey.

Nelson, A.R., Personius, S.F., Sherrod, B.L., Kelsey, H.M., Johnson, S.Y., Bradley, L.A. and Wells, R.E., 2014. Diverse rupture modes for surface-deforming upper plate earthquakes in the southern Puget Lowland of Washington State. *Geosphere*, 10(4), pp.769-796.

Cordey, Fabrice, 2025, Back to the suture: Bridge River-Hozomeen ribbon cherts reveal long-lived oceanic plate stratigraphy and polarity of subduction in western North America, *GSA Bull.*, Vol. 38, No. 1-2, pp. 155-176, doi <https://doi.org/10.1130/B38286.1>.

Please send your reading recommendations to Newsletter Editor [Maria Parente](#).

To update your account information, go to [NWGS.org/membership](https://nwgs.org/membership).  
Questions or comments? Contact President [Jackson Lundgren](#).

## Board of Directors

President [Jackson Lundgren](#)  
AESI

President Elect **OPEN**

Past President [David Boyer](#)  
Weyerhaeuser

Secretary [Amy Knudson](#)

Treasurer [Tom Colligan](#)  
Retired

At-Large Board Members [Tom Bush](#)  
Pierce College Puyallup  
[Tom Colligan](#)

## Other Personnel

Membership Chair **Open**

Field Trip Coordinator [Kathleen Goodman](#), WSP

Newsletter Editor & Publications [Maria Parente](#)  
Pierce County Library

Webmaster [Matthew Porter](#)  
AESI