

# NORTHWEST GEOLOGICAL SOCIETY

A regional association of professionals, students & others interested in geology  
Please browse [www.nwgs.org](http://www.nwgs.org) for more about us

## April, 2026 Newsletter

Volume 40, Number 4

April 14 Program Speaker (**New meeting location-see below!**) 

5:30pm: No-host social hour; 6:30pm: Dinner  
7:30pm: Speaker program ([reservations here](#), see below for details)

**Speaker:** Colin Amos, Professor of Geology, Western Washington University

**Title:** Geologic context for multi-fault earthquake ruptures: NZ and PNW perspectives

### Abstract:


Multi-fault earthquake ruptures over the past decade in New Zealand, Turkey, and California highlight the hazards and complexity of surface deformation associated with these events. Recent studies point to the occurrence of multi-fault earthquakes in Cascadia, including the 923 CE Seattle fault – Saddle Mountains fault ruptures, as well as other prehistoric events associated with shallower portions of the oblique subduction zone. These events mirror the observed kinematic and rupture complexity of the 2016 M7.8 Kaikōura earthquake in Aotearoa New Zealand. This talk focuses on the tectonic geomorphology of the 2016 epicentral region in North Canterbury, synthesizing new and ongoing efforts to characterize fault kinematics, slip rates, landform age, and longer-term bedrock exhumation associated with the transition from subduction to oblique plate collision. In doing so, I aim to provide context for multi-fault earthquakes within oblique plate boundaries as means for understanding why such ruptures might reflect the norm rather than a rare exception.

### IN-PERSON PROGRAM DINNER RESERVATIONS!

**Cost:** NWGS member dinner: \$40; Non-member dinner: \$50; Student dinner: \$10; Talk-only: \$10;  
Student talk-only: free

**To register for attending in-person:** please [make your reservation here \(nwgs.org/meeting-registration/\)](http://nwgs.org/meeting-registration/) by the Thursday prior to the meeting.

Catered menu will be displayed on the NWGS dinner reservation page.

 **New Location:** Hotel 116, 625 116th Ave NE, Bellevue, WA. 98004 ([Google Maps driving directions](#)). Park in the hotel parking area, enter near or through Woods Coffee to a small lobby, then up the stairs to the ballroom.

### Upcoming Speakers and Field Trips

May 12: Sean Mulcahay, topic TBA

Spring Field Trip: Jim Miller/Kathy Troost, Oly. Pen. landslide & eroding terrace at Rialto Beach, April 10-12.

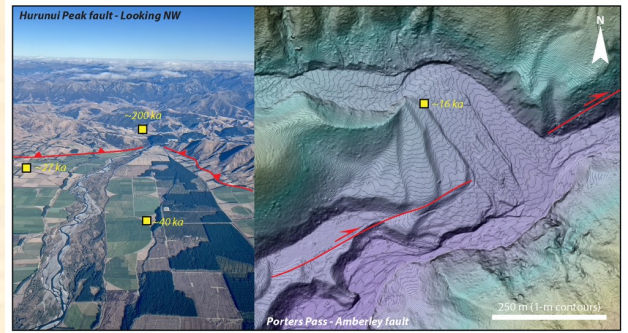
Spring Field Trip: Nick Zentner canoe field trip on the Columbia River, dates TBD.

Fall, 2026: Dave McCormack & Daryl Cowan, location and dates TBD.

If you would like to volunteer to give a talk or lead a field trip for NWGS, please contact President [Jackson Lundgren](#).

Please see the [NWGS website](#) for detailed announcements.  
Contact webmaster [Matthew Porter](#) if you have any announcements to post on the website.

- NWGS is still looking to fill the **President Elect** position. Please contact President [Jackson Lundgren](#) for more information. **Shared governance is critical** for the continued viability of our organization.
- Field trip coordinator [Kathleen Goodman](#) is working on a field trip to **Cornwall & Devonshire** and possibly **Wales** in the summer of 2027. Please contact her to be put on her list of interested folks. No payment is required yet, cost TBD.
- Be ready to join an amazing **field trip to the Olympic Peninsula** led by **Jim Miller and Kathy Troost**, April 10-12, 2026, where they are monitoring “a really cool landslide” and will visit an eroding terrace at Rialto Beach.
- Chris Darman is working on a field trip to Wales, early Sept., 2027
- **Next Board of Directors meeting:** Tuesday, April 21, 6:00 pm via Zoom. Members are welcome to attend. Please email [nwgs.secretary.com](mailto:nwgs.secretary.com) for the Zoom link.



## About NWGS

The [Northwest Geological Society](#) is a non-profit educational organization which provides a forum for information and discussion on Northwest geology and related topics. The Society sponsors talks by leading academic and professional geologists at its monthly meetings, conducts field trips to locales of regional geologic interest, and publishes meeting summaries and field guides based on those activities. Membership is open to anyone interested in regional geoscience issues.

**Program meetings** are the 2<sup>nd</sup> Tuesdays, October through May at the [Hotel 116, 625 NE 116th Ave NE, Bellevue](#). Reservations are required to attend in-person (Member dinner: \$40; Non-member dinner: \$50; Student dinner: \$10; Talk-only: \$10; Student talk-only: free).

**Field trips (members only):** The Society sponsors two overnight field trips each year, one in the fall and one the spring, to locales of regional geologic interest.

**Membership** is open to anybody with an interest in geology. **Annual dues:** Professional: \$55; Student: \$10. **To join or pay annual dues:** go to the [NWGS website](#), or visit our website for more details. We look forward to seeing you soon!

## Recommended Readings

### Board of Directors

**President** [Jackson Lundgren](#)  
AESI

**President Elect** **OPEN**

**Past President** [David Boyer](#)  
Weyerhaeuser

**Secretary** [Amy Knudson](#)

**Treasurer** [Tom Colligan](#)  
Retired

**At-Large Board Members** [Maria Parente](#)  
Pierce County Library  
[Tom Colligan](#)

### Other Personnel

**Membership Chair** **Open**

**Field Trip Coordinator** [Kathleen Goodman](#), WSP

**Newsletter Editor & Publications** [Maria Parente](#)  
Pierce County Library

**Webmaster** [Matthew Porter](#)  
AESI

Please send your reading recommendations to Newsletter Editor [Maria Parente](#).

To update your account information,, go to [NWGS.org/membership](http://NWGS.org/membership).  
Questions or comments? Contact President [Jackson Lundgren](#).